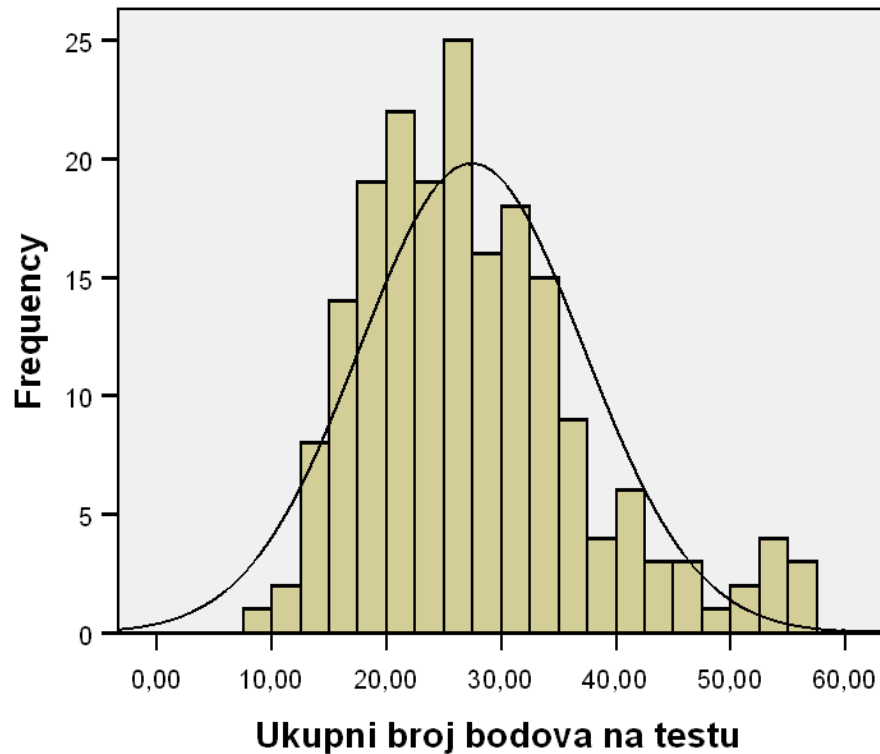


**METRIJSKA ANALIZA
NACIONALNOGA ISPITA IZ
LOGIKE
PROVEDENOGA U LIPNJU 2008.**

Istraživačko-razvojni odjel
NCVVO

Raspodjela ukupnih rezultata

Histogram





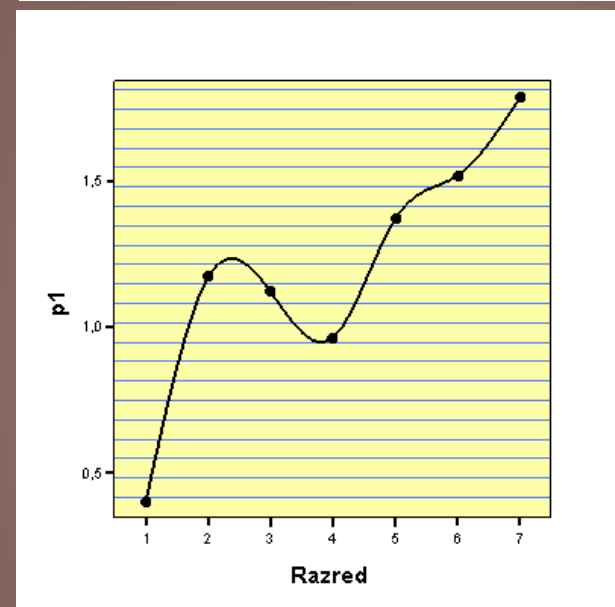
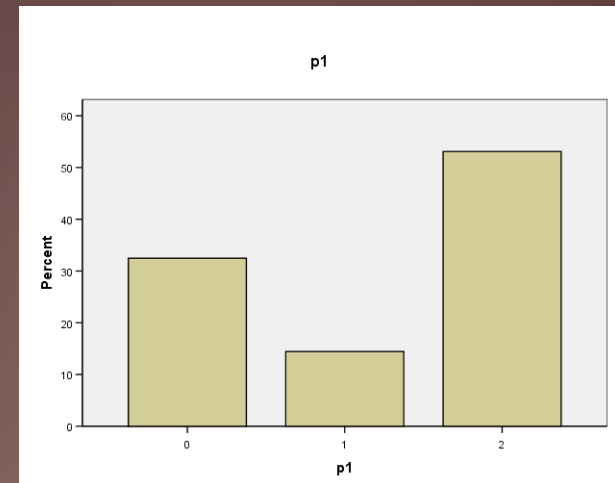
- $N = 194$
- $M = 27.44$
- $SD = 9.769$
- $MIN = 8; MAX = 57$
- Max. mogući rezultat = 60
- Cronbach $\alpha = 0.732$



Težina zadatka	Redni broj zadatka
Vrlo težak (0 – 0,2)	6, 9
Težak (0,21 – 0,4)	8, 10, 14
Srednje težak (0,41 – 0,6)	1, 5, 7, 11, 12, 13
Lagan (0,61 – 0,80)	2, 3
Vrlo lagan (0,81 – 1)	4

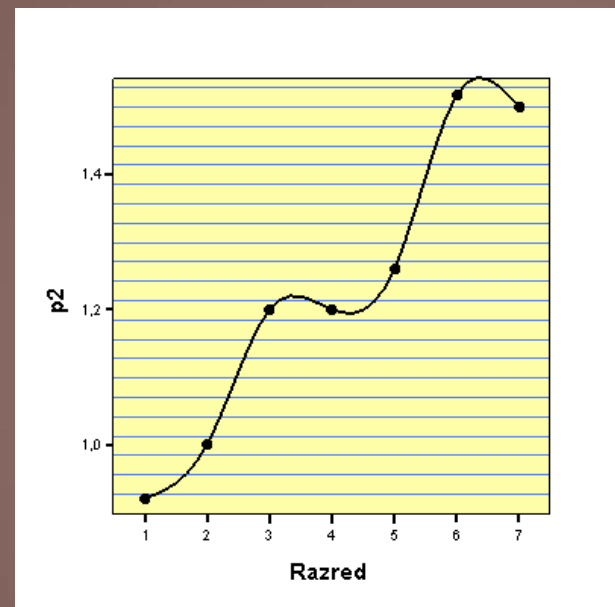
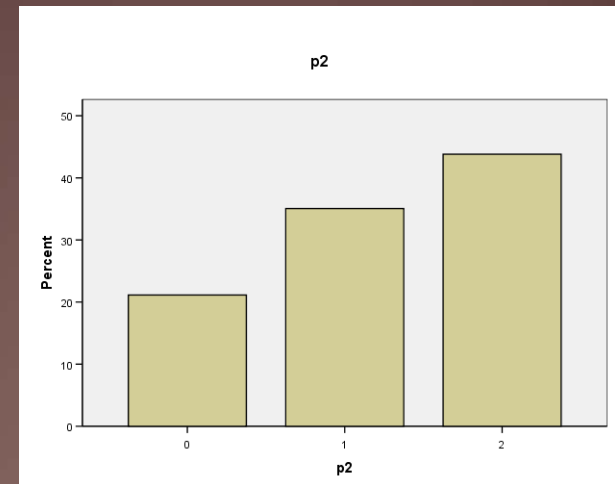
1. Proučite sljedeće citate i odredite koje su riječi ispuštene.

M	1.21 (0.61)
SD	0.904
ID	0.252
α - zadatak	0.726



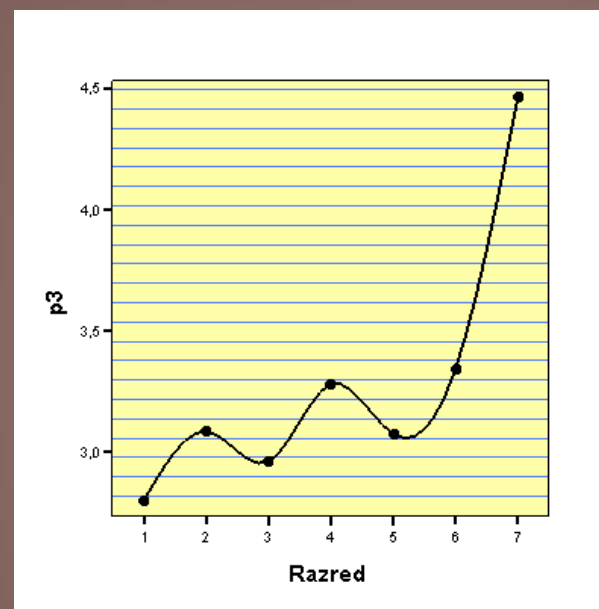
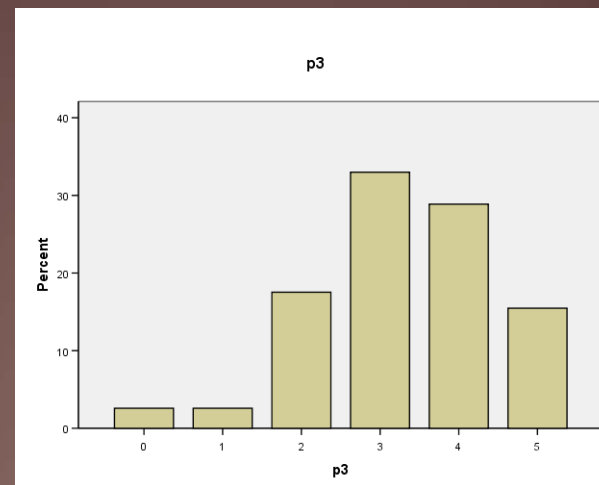
2. Ispitajte odnose sljedećih pojmova.

M	1.23 (0.62)
SD	0.775
ID	0.196
α - zadatak	0.730



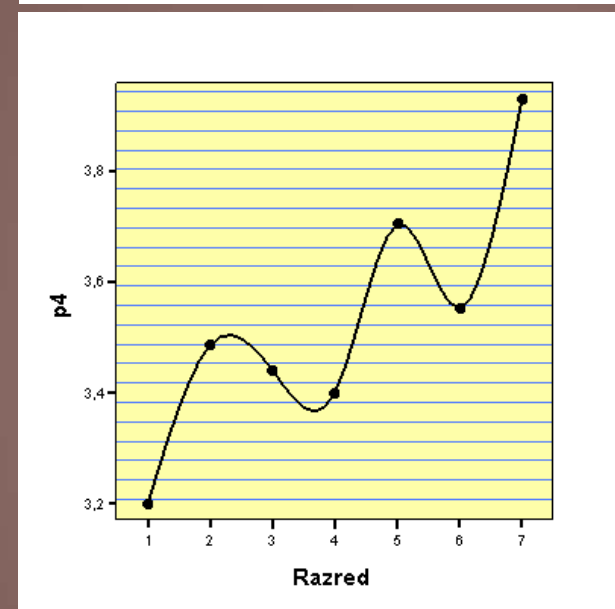
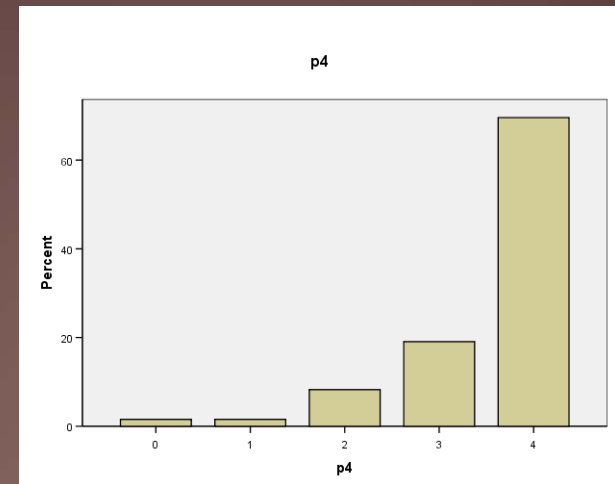
3. Ispitajte u kakvom su odnosu pojmovi...

M	3.29 (0.66)
SD	1.157
ID	0.310
α - zadatak	0.721



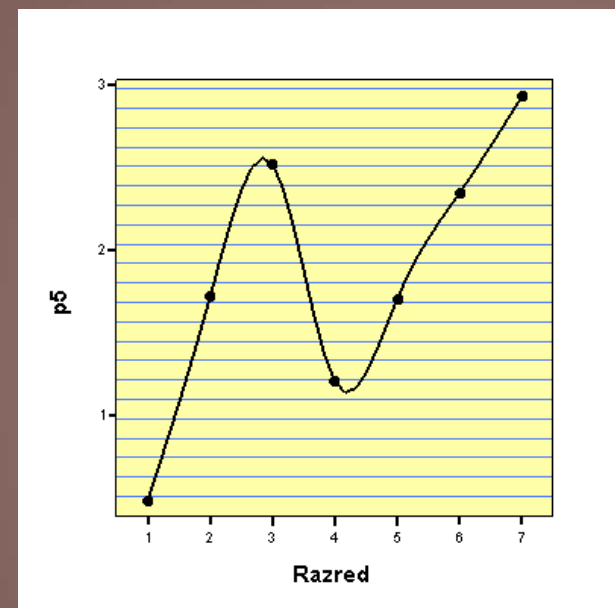
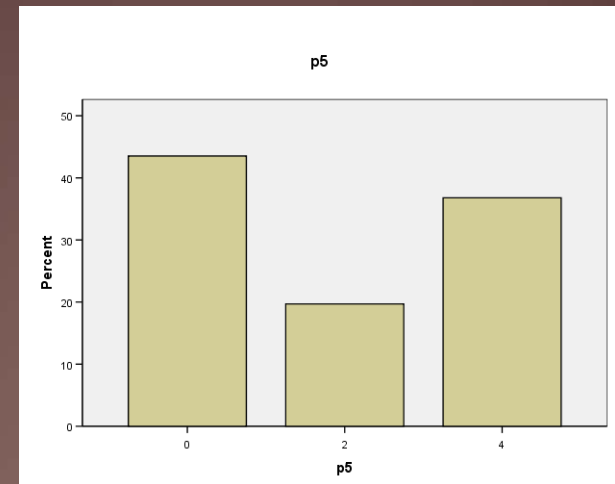
4. Proučite sljedeće izraze...

M	3.54 (0.89)
SD	0.834
ID	0.171
α - zadatak	0.732



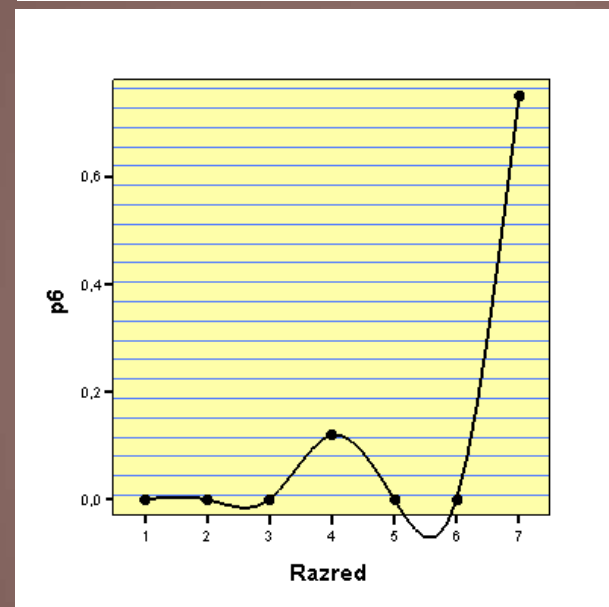
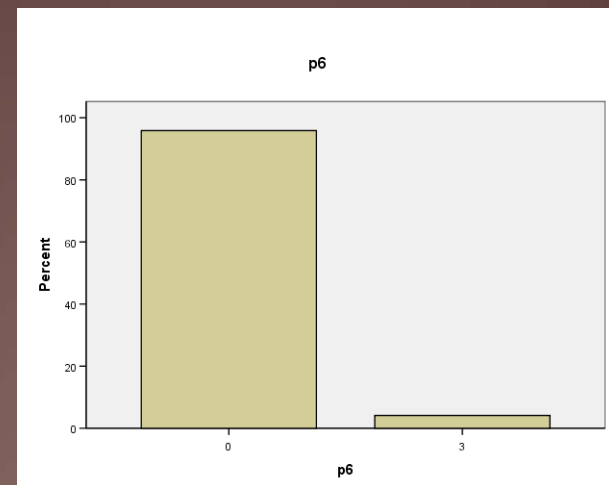
5. U ovome je zadatku riječ o logičkoj nužnosti i logičkoj mogućnosti.

M	1.86 (0.47)
SD	1.788
ID	0.178
α - zadatak	0.740



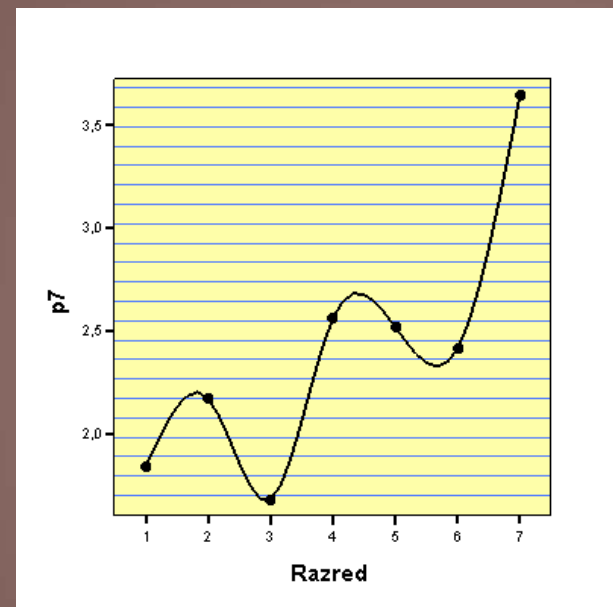
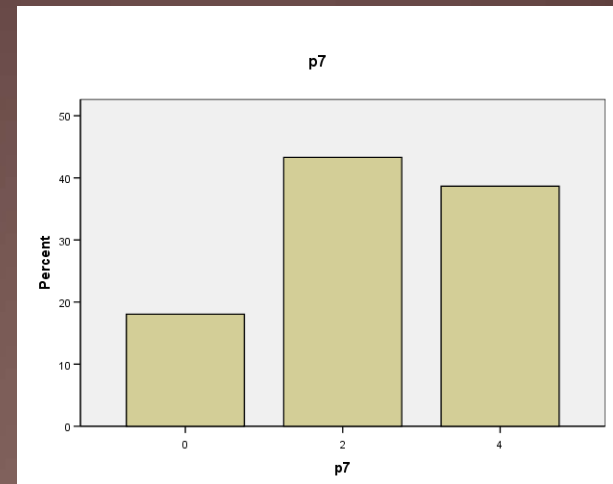
6. Proučite zadani tekst.

M	0.12 (0.04)
SD	0.598
ID	0.397
α - zadatak	0.722



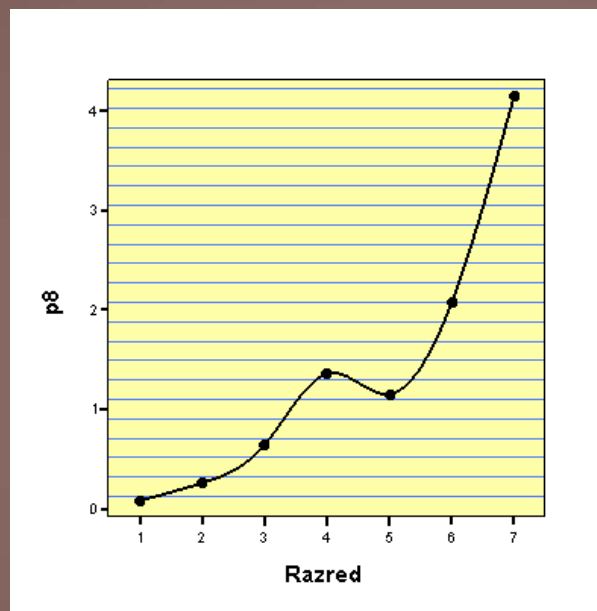
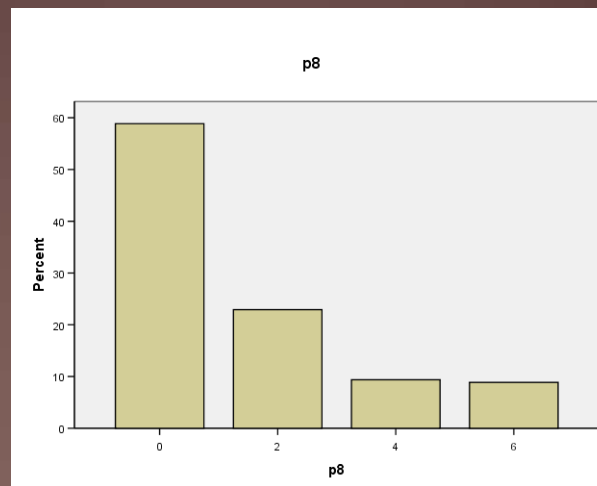
7. Zadana je sljedeća istinita tvrdnja.

M	2.41 (0.60)
SD	1.452
ID	0.218
α - zadatak	0.730



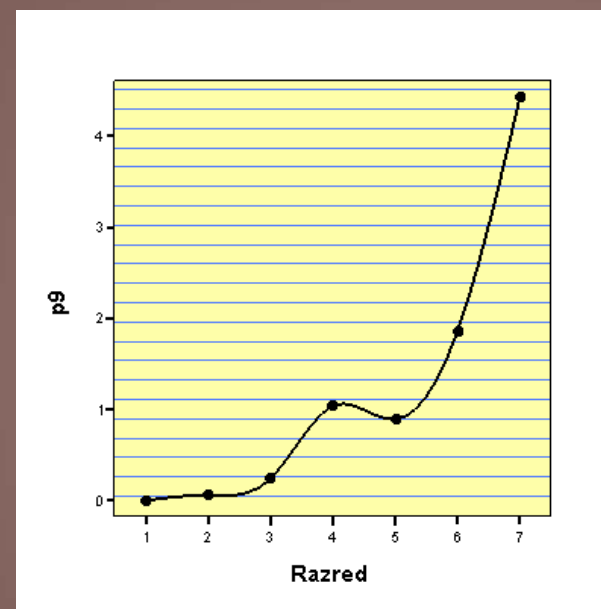
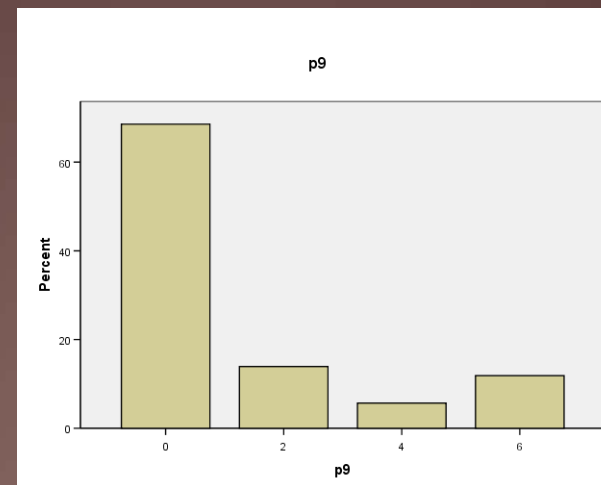
8.

M	1.38 (0.23)
SD	1.937
ID	0.591
α - zadatak	0.681



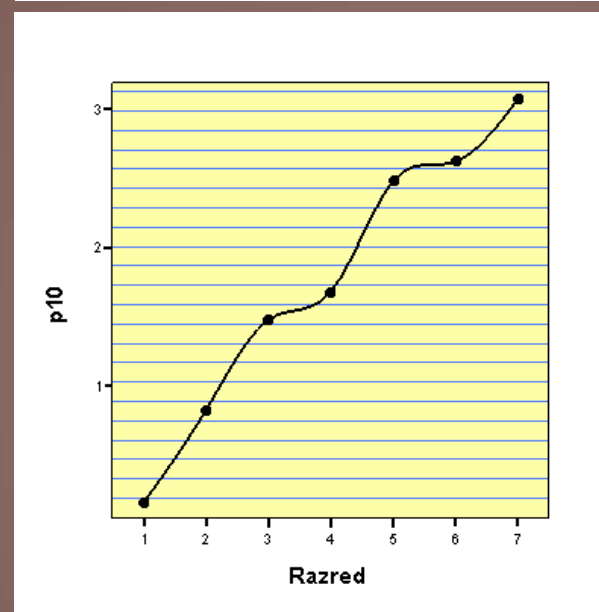
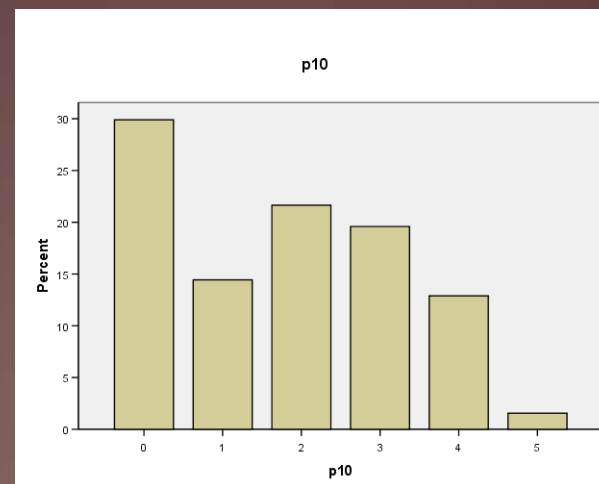
9. Zadan je sljedeći Vennov dijagram.

M	1.22 (0.20)
SD	2.067
ID	0.593
α - zadatak	0.680



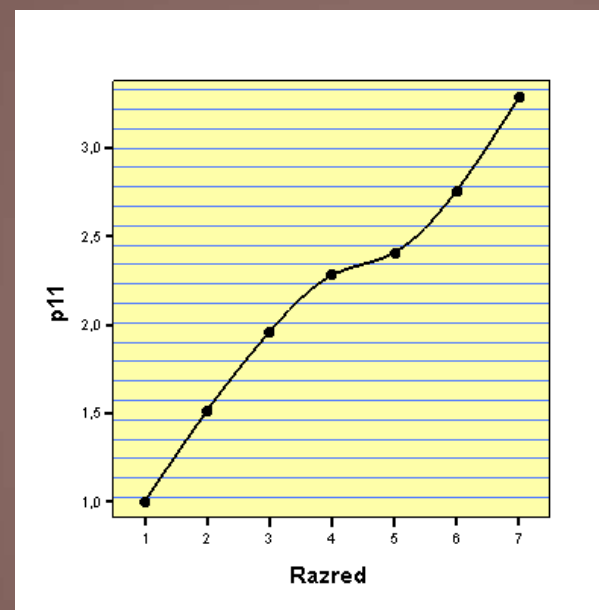
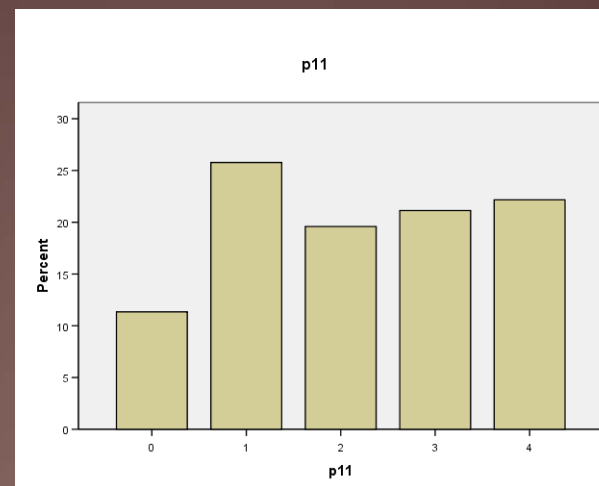
10. Proučite sljedeći tekst.

M	1.76 (0.35)
SD	1.464
ID	0.518
α - zadatak	0.697



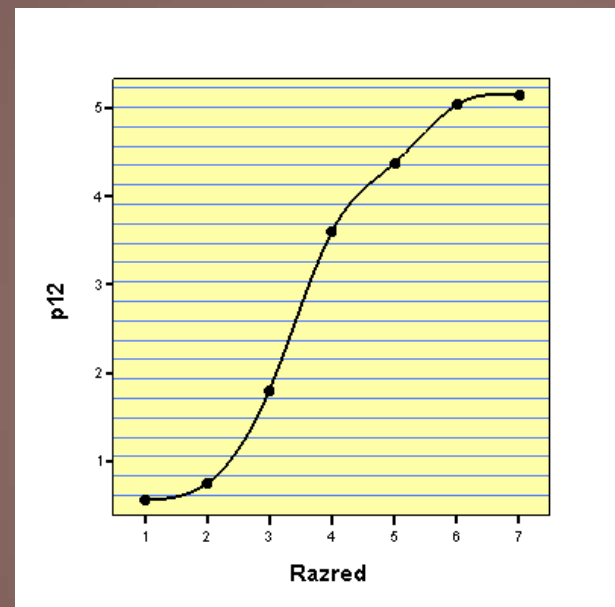
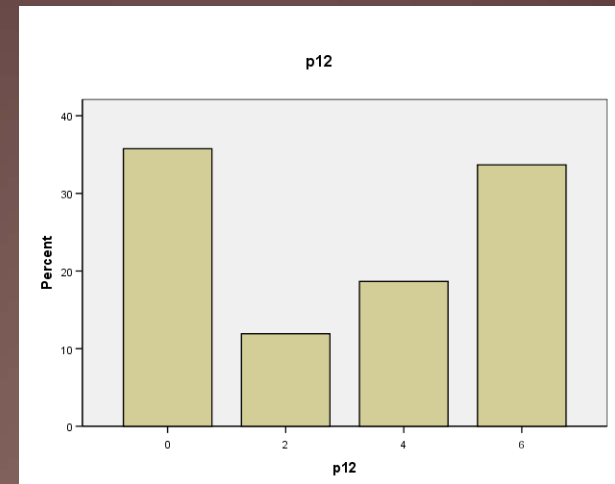
11. Označite kraj broja svakoga iskaza:

M	2.17 (0.54)
SD	1.338
ID	0.416
α - zadatak	0.710



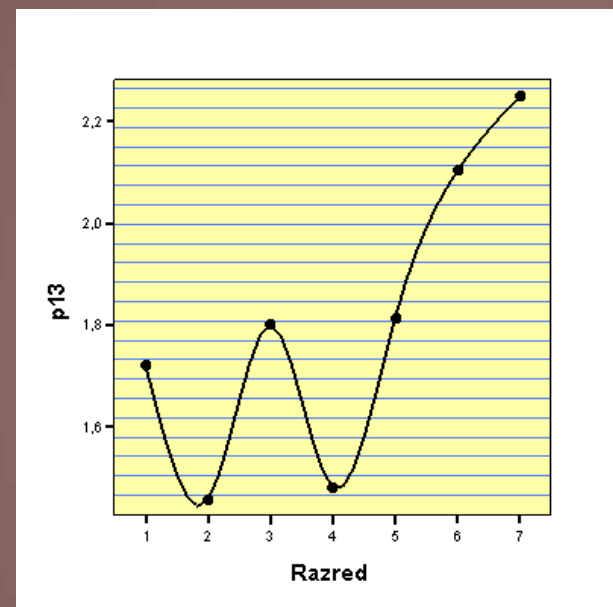
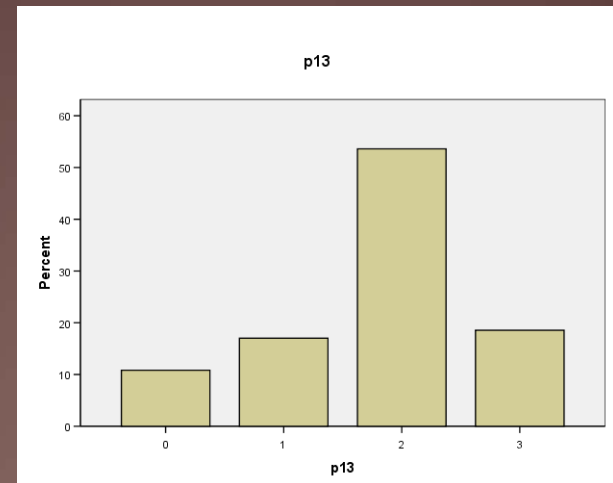
12. U tablicu unesite istinitosnu vrijednost rečenica...

M	3.01 (0.50)
SD	2.560
ID	0.460
α - zadatak	0.708



13. Odredite jesu li navedene tvrdnje točne (T) ili netočne (N).

M	1.80 (0.60)
SD	0.867
ID	0.190
α - zadatak	0.730



14. Odredite jesu li zadani zaključci valjani (V) ili nevaljani (N).

M	2.45 (0.41)
SD	1.482
ID	0.377
α - zadatak	0.713

